

Art & Soul



Stalemate, an installation by Beili Liu

These diverse galleries invite art lovers to explore Oakland's creative side.

Joyce Gordon Gallery

One of the longest-running fine art galleries in the city, Joyce Gordon Gallery has been part of the Oakland art scene for more than a decade. Since it opened in 2003, the 1,500-square-foot gallery has hosted more than 200 exhibitions. Primarily focused on Bay Area artists, the gallery celebrates the creativity and cultural diversity of the region through sculpture, painting, photography, and more. The gallery also fosters creative and cultural exchange among national and international artists through special events such as lectures and live music. joycegordongallery.com



Creative Growth

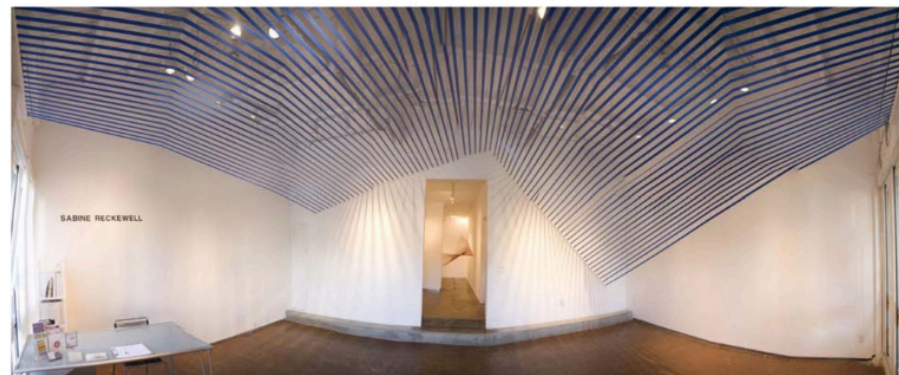
Established in 1974, Creative Growth is both the oldest and largest art studio for people with disabilities in the world. A contemporary gallery space dedicated to exhibiting artwork made by the organization's 150 working artists accompanies the studio and shows pieces such as Dan Miller's acrylic work (above). In addition to seven annual exhibitions at the Oakland gallery, Creative Growth artwork is represented in collections at San Francisco Museum of Modern Art, MoMA New York, and prominent contemporary art collections and fairs internationally. creativegrowth.org

Vessel Gallery

Owner Lonnie Lee opened Vessel in 2004 and is passionate about developing relationships with artists and collectors. Championing emerging and established artists, Lee curates compelling solo shows and group exhibits in a historic building in Uptown.

Vessel presents a regional and international lens on art through site-specific installations, paintings, sculpture, and fine jewelry — all with a refined eye toward individuation, distinction, and respect for nature as a source. Named Best Gallery for three years running, Vessel is a San Francisco Art Dealers Association member. vessel-gallery.com

PHOTOS (CLOCKWISE FROM FAR LEFT): COURTESY OF CREATIVE GROWTH; VESSEL GALLERY; TRANSMISSION GALLERY; CHANDRA CERRITO CONTEMPORARY; BY DASHA NATHURAI; JOYCE GORDON GALLERY

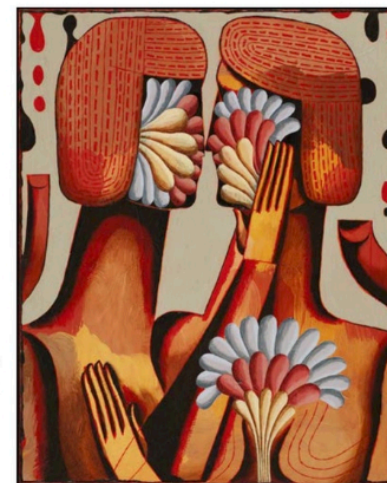


SABINE RECKEWELL

INSTALLATION BY SABINE RECKEWELL

The Transmission Gallery

Transmission Gallery's strong reputation with visitors and collectors is grounded in its thoughtful exhibitions and catalogs. The gallery is committed to the collector, the artist, and the community, acting as a forum for the exploration of contemporary art. The gallery consistently presents well-established and emerging artists' works from California and beyond, such as *Couple #46* by Richard Downs (above). Transmission Gallery is located in a beautiful neo-modern space, complete with an upstairs roof garden complementing the clean line of this contemporary environment. thetransmissiongallery.com



Chandra Cerrito Contemporary

Established in 2007 as a curatorial project space in Oakland's Uptown gallery district, Chandra Cerrito Contemporary features exhibitions and site-specific installations by regional and national artists. The gallery highlights works with conceptual strength, refined craftsmanship, contemporary

vision, and art historical relevance. Talks led by curators, critics, and other arts professionals foster dialogue and education. Chandra Cerrito is a member of the San Francisco Art Dealers Association and regularly participates in international art fairs in Miami, Los Angeles, San Francisco, and New York. chandraccerritcontemporary.com